

**REGION I EMERGENCY MEDICAL SERVICES
STANDING MEDICAL ORDERS
EMT – Basic, EMT – Paramedic**

SMO: Closest Hospital Transport

Overview: All patients in EMS Region 1 should be transported by EMS Region 1 vehicles to the closest hospital except in one of the following situations (see flowchart):

GUIDELINES

A. Stable Patients

If the patient is stable and the medical benefits to transport to other than the closest hospital outweigh the risks to the patient, the patient may be transported to the requested hospital if:

1. The patient release form is completed
2. Determined by the EMSMD or designee, after contacting Medical Control, transfer is appropriate

In each of these situations the patient must be determined to be medically stable. The EMT, once the request is made known to them, should contact the Kishwaukee Community Hospital Emergency Department Medical Control and discuss the request with the EMSMD or designee. If it is determined that transporting the patient to a more distant medical center does not present undue risk after discussing the case with the EMSMD or designee, the EMSMD or designee will contact the receiving medical center and give them a full report on the patient's condition.

Unless the receiving hospital is on bypass status, it will be assumed that they will have the capacity and willingness to treat such a patient since they will be open to receive any and all ambulance runs.

B. Unstable Patients

If the patient is unstable and refusing to go to the closest hospital, this will be communicated to the EMSMD or designee at Emergency Department Medical Control. He/she will evaluate all risks and benefits and direct the EMTs as he/she sees appropriate. Sole responsibility of where the patient is transported rests with the EMSMD or designee through the Emergency Department Medical Control in such cases. Unstable patient bypasses must be documented on the telemetry log.

C. Trauma Patients

Trauma patients should be brought to the closest trauma center based on IDPH and Region I Trauma recommendations.

Documentation of adherence to protocol:

- Contact with Medical Control to establish state of hospital diversion status.
- Orders received from Medical Control regarding patient destination.

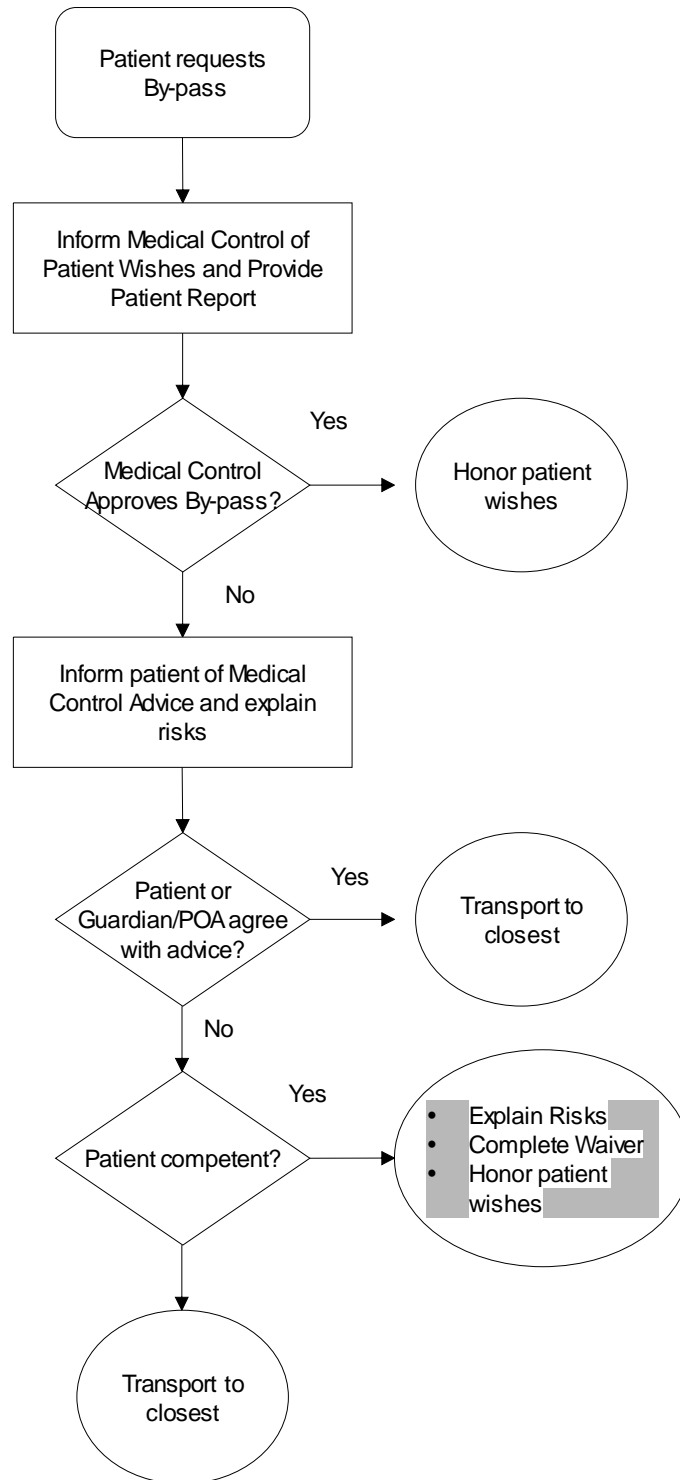
Medical Control Contact Criteria

- | |
|---|
| <ul style="list-style-type: none"><input type="checkbox"/> Verification of hospital diversion status<input type="checkbox"/> Orders received from Medical Control regarding patient destination. |
|---|

PRECAUTIONS AND COMMENTS

- Be familiar with local System and State procedure regarding Closest Hospital Transport.
- Be advised to call Medical Control EARLY to determine patient destination.

Patient Request to By-pass Closest Facility



**** NOTE:** Notification and permission from Medical Control will be done from the scene prior to transport.